

THERMO-ELECTRIC COOLERS

SO₃ AEROSOL REMOVAL MODEL 10410

Physical Description

Alternating channels (pre-programmed)
 2 x 10" Durinert[®] (inert coated stainless steel) heat exchangers connected in series (passive / active)
 2 x 10" packed Kynar heat exchangers (active / active)
 3 LCD displays w/ associated LED indicators

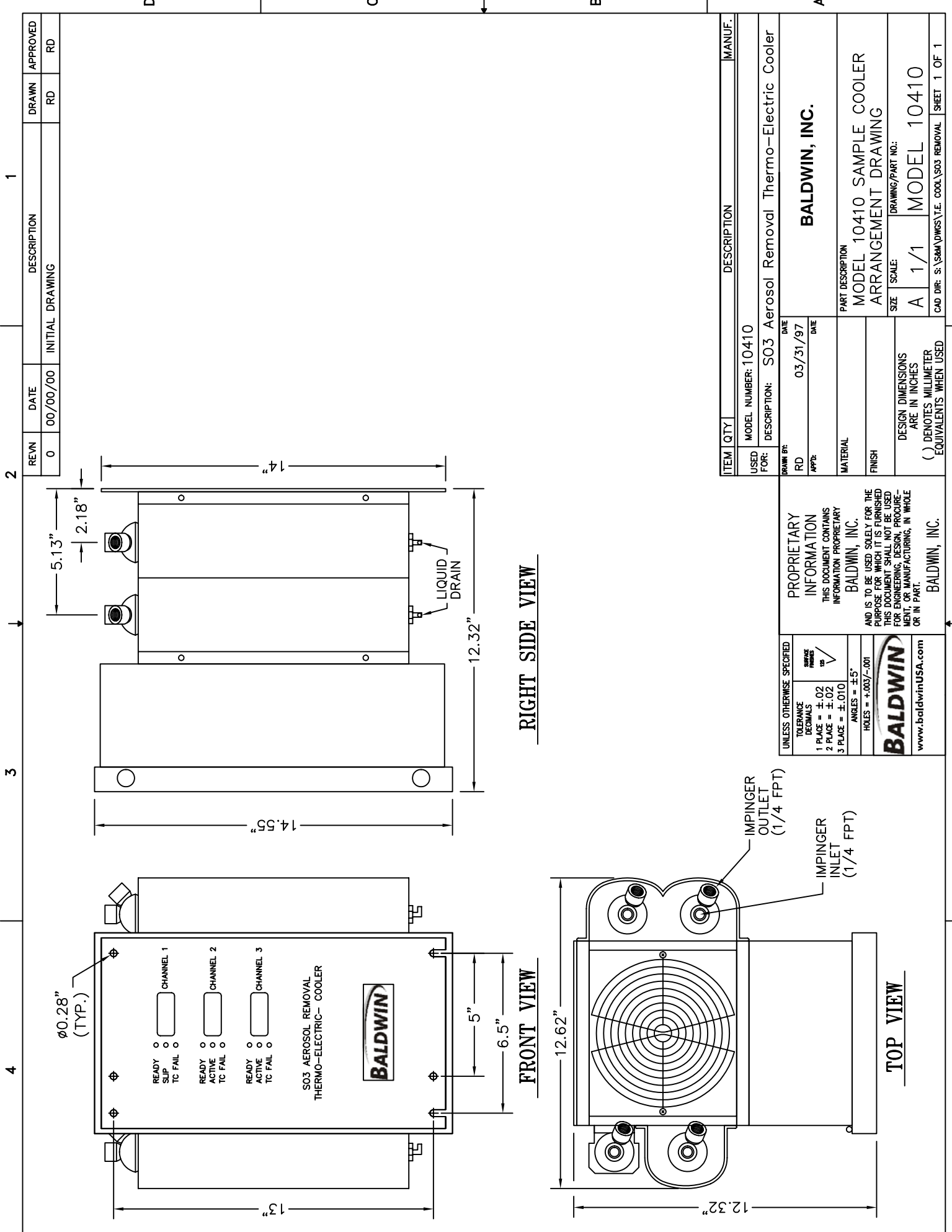


Operating Specifications

Standard Sample Gas Flow Rate	5-10 LPM 10.6-21 SCFH
Maximum Inlet Dew Point at Rated Flow	173°F @ 43% H ₂ O 78°C
Dimensions	14.55 x 12.62 x 12.32 in. HWD 37.0 x 32.1 x 29.5 cm
Weight	35 lbs 15.9 kg
Maximum Inlet Sample Temperature	400°F (200°C) Durinert [®] Impingers 280°F (138°C) Kynar [®] Impingers
Maximum Inlet Pressure	45 psig 3 bar /5 2250 mmHg
Maximum Heat Exchanger Pressure Drop	<+1 in. H ₂ O
Ambient Temperature Range	33-104°F 0.56-40°C
Outlet Sample Gas Dew Point	19.4°F -7°C
Inlet Tubing Connection	3/8 in. FPT
Outlet Tubing Connection	1/4 in. FPT
Drain Tubing Connection	3/8 in. FPT
Voltage	110 (220 optional) VAC 50/60 Hz
Power Supply	740W

BaldwinTM is a Trademark of Perma Pure LLC
 Kynar[®] is a Registered Trademark of Alf Autochem of North America





RIGHT SIDE VIEW

FRONT VIEW

TOP VIEW

REV#	DATE	DESCRIPTION	DRAWN	APPROVED
0	00/00/00	INITIAL DRAWING	RD	RD

ITEM	QTY	DESCRIPTION	MANUF.
MODEL NUMBER: 10410			
USED FOR: DESCRIPTION: SO3 Aerosol Removal Thermo-Electric Cooler			
DRAWN BY:	DATE		
RD	03/31/97		
APPR:	DATE		
PART DESCRIPTION			
BALDWIN, INC.			
MODEL 10410 SAMPLE COOLER ARRANGEMENT DRAWING			
SIZE SCALE:		DRAWING/PART NO.:	
A 1/1		MODEL 10410	
DESIGN DIMENSIONS ARE IN INCHES			
() DENOTES MILLIMETER EQUIVALENTS WHEN USED			
CAD DIR: S:\S8M\DWGS\T.E. COOL\SO3 REMOVAL			
SHEET 1 OF 1			

PROPRIETARY INFORMATION
 THIS DOCUMENT CONTAINS INFORMATION PROPRIETARY TO BALDWIN, INC.
 AND IS TO BE USED SOLELY FOR THE PURPOSE FOR WHICH IT IS FURNISHED. THIS DOCUMENT SHALL NOT BE USED FOR ENGINEERING, DESIGN, PROCUREMENT, OR MANUFACTURING, IN WHOLE OR IN PART.
 BALDWIN, INC.

UNLESS OTHERWISE SPECIFIED

TOLERANCE DECIMALS	FINISH
1 PLACE = ±.02	AS SHOWN
2 PLACE = ±.02	PER
3 PLACE = ±.010	

ANGLES = ±5°
 HOLES = +.003/- .001

BALDWIN
 www.baldwinUSA.com